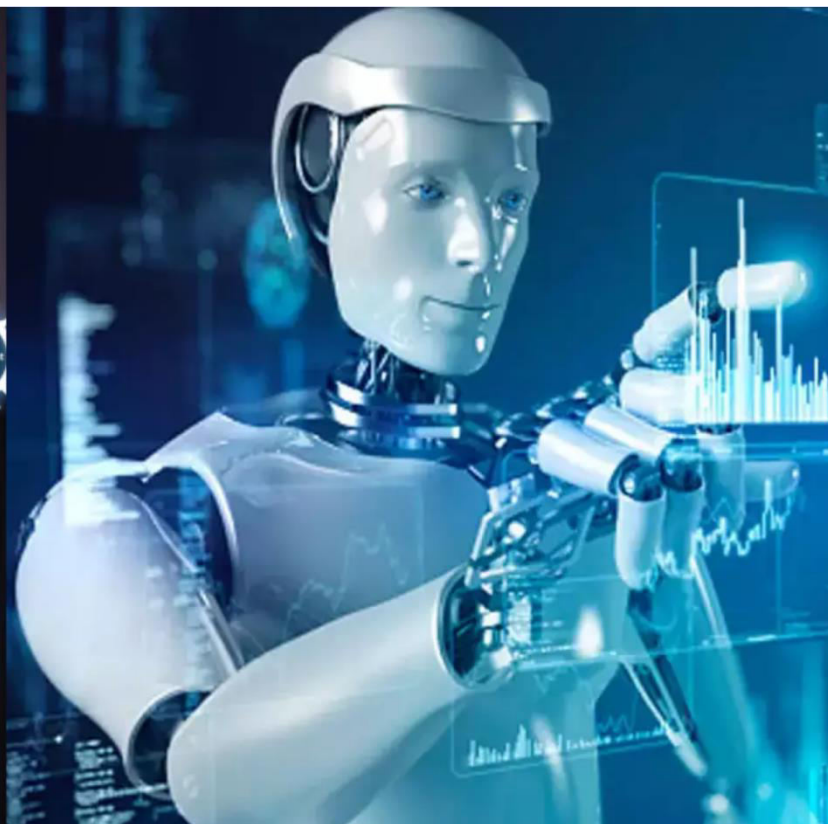




# International Journal of Innovative Research in Science Engineering and Technology (IJIRSET)

*(A Monthly, Peer Reviewed, Refereed, Scholarly Indexed, Open Access Journal)*



**Impact Factor: 8.699**

**Volume 14, Issue 11, November 2025**

# Trip Sync: Connect, Travel and Explore

Sagar K R, Aisiri S Harish, Anusha A, Anusha G R, Gayathri Devi B

Assistant Professor, Computer Science Department, SJMIT, Chitradurga, Karnataka, India

7th Semester, Computer Science Department, SJMIT, Chitradurga, Karnataka, India

7th Semester, Computer Science Department, SJMIT, Chitradurga, Karnataka, India

7th Semester, Computer Science Department, SJMIT, Chitradurga, Karnataka, India

7th Semester, Computer Science Department, SJMIT, Chitradurga, Karnataka, India

**ABSTRACT:** This research paper presents Trip Sync, an AI-powered solo travel platform designed to revolutionize itinerary planning, expense tracking, and companion matching for solo travelers. The system integrates a modular full-stack architecture combining React for frontend development, Express.js for backend services, MongoDB for data storage, and Redis for real-time caching. A dedicated FastAPI microservice orchestrates AI workflows using LangChain and Google GenAI to generate personalized travel suggestions tailored to user preferences, budget constraints, and safety requirements. The platform implements secure authentication through JWT and Bcrypt, while Socket.IO enables real-time synchronization of itineraries and expenses across multiple devices. A responsive interface built with TailwindCSS ensures accessibility and usability across various platforms. Extensive testing validated the system's performance with low response times averaging 1.2 seconds, achieving 91.2% retrieval accuracy and 92.3% companion matching accuracy. User evaluation studies with 20 participants yielded an average satisfaction rating of 4.6 out of 5, confirming the platform's effectiveness in addressing real-world solo travel challenges. The modular architecture supports future scalability and enhancements including mobile application deployment, integration with external booking APIs, and advanced AI personalization features. Trip Sync demonstrates the practical application of artificial intelligence and modern web technologies in solving complex travel planning challenges, offering a personalized, secure, and extensible solution that bridges technological innovation with user-centric design principles.

**KEYWORDS:** Artificial Intelligence, Travel Technology, Full-Stack Development, Machine Learning, Natural Language Processing, React Framework, Express.js, MongoDB Database, Redis Caching, FastAPI, LangChain, Google GenAI, Retrieval-Augmented Generation, Real-Time Synchronization, Socket.IO, JWT Authentication, TailwindCSS, Companion Matching, Itinerary Planning, Travel Recommendation Systems, Collaborative Filtering, Content-Based Filtering, K-Means Clustering, Cosine Similarity, User Experience Design, Web Application Development, Microservices Architecture, RESTful APIs, Secure Authentication.

## I. INTRODUCTION

Solo travel has experienced exponential growth in recent years, with millions of individuals seeking independent exploration and personal growth through travel experiences. However, solo travelers face unique challenges that distinguish their needs from group or family travel. The complexity of planning personalized itineraries, managing travel expenses efficiently, ensuring personal safety, and finding compatible travel companions creates significant barriers to optimal travel experiences. Traditional travel platforms predominantly cater to group travel or focus on commercial booking services, offering limited personalization and minimal support for the specific requirements of solo travelers.

Existing travel planning tools rely heavily on static data and manual input, requiring users to navigate multiple disconnected platforms for different aspects of trip planning. This fragmented approach leads to inefficient planning processes, increased time investment, and suboptimal travel decisions. The absence of intelligent recommendation systems that understand individual preferences, budget constraints, and safety considerations further compounds these challenges. Additionally, solo travelers often struggle to connect with compatible companions who share similar interests, travel styles, and schedules, leading to missed opportunities for social interaction and shared experiences.

To address these critical gaps, this research introduces Trip Sync, an AI-powered platform specifically designed for solo travelers. The system leverages cutting-edge technologies including artificial intelligence, machine learning, and real-



time communication protocols to deliver a comprehensive travel planning solution. Trip Sync employs a modular full-stack architecture built on React, Express.js, MongoDB, and Redis, ensuring scalability, maintainability, and optimal performance. The platform integrates a dedicated FastAPI microservice that orchestrates AI workflows using LangChain and Google GenAI, enabling context-aware itinerary generation and intelligent companion matching based on sophisticated algorithms.

The system implements secure authentication mechanisms using JWT tokens and Bcrypt encryption, protecting user privacy and ensuring data security. Real-time synchronization capabilities powered by Socket.IO enable seamless updates of itineraries and expenses across multiple devices, facilitating dynamic travel management. The responsive user interface designed with TailwindCSS and built using Vite ensures fast load times and consistent user experience across desktop and mobile platforms.

Trip Sync distinguishes itself from conventional travel platforms through its hybrid recommendation model that combines clustering algorithms, content-based filtering, and collaborative filtering techniques. This sophisticated approach enables the system to generate highly personalized travel suggestions that adapt to individual preferences, travel history, and real-time contextual factors. The companion matching module utilizes advanced similarity scoring algorithms to connect solo travelers with compatible companions, fostering social connections while maintaining user privacy and control.

This study explores the comprehensive design, implementation, and evaluation of Trip Sync, focusing on improving accuracy, usability, and accessibility in travel planning for solo travelers. The research demonstrates how modern web technologies and artificial intelligence can be effectively combined to address real-world challenges, creating a platform that not only simplifies logistical aspects of travel but also enhances decision-making through intelligent recommendations and real-time collaboration capabilities.

## II. LITERATURE SURVEY

The evolution of travel technology has witnessed significant advancements in recent years, with artificial intelligence and machine learning playing increasingly important roles in enhancing user experiences. Research in travel recommendation systems has explored various approaches to personalize suggestions and improve decision-making processes for travelers.

**AI-Powered Travel Recommendation Systems:** Recent studies by Maheen et al. (2022) demonstrated the effectiveness of machine learning-based travel recommendation systems that analyze user interests, travel history, and budget constraints to generate personalized itineraries. Their research employed supervised learning algorithms integrating collaborative and content-based filtering to enhance recommendation accuracy. The study emphasized context-aware personalization and demonstrated how artificial intelligence can bridge the gap between conventional travel tools and intelligent planning platforms. However, their approach focused primarily on destination recommendations without addressing companion matching or real-time collaboration features.

**Hybrid Filtering Techniques:** Sangeetha and Praveen Kumar (2021) introduced a hybrid recommendation system combining collaborative filtering and content-based filtering for travel destination and activity suggestions. Their system captured user preferences and travel history while incorporating sentiment analysis from user reviews to improve accuracy. The research highlighted the effectiveness of hybrid models in enhancing user satisfaction and decision-making in travel planning. Nevertheless, the system lacked integration with real-time synchronization capabilities and did not address the specific needs of solo travelers.

**Big Data Analytics in Travel Planning:** Ramesh et al. (2020) explored the application of artificial intelligence and big data analytics in travel planning, proposing a system that analyzes large-scale travel data, user behavior, and contextual factors to generate optimized itineraries. Their research emphasized the role of intelligent systems in improving travel efficiency and personalization, particularly for solo and budget-conscious travelers. However, the computational complexity of their approach raised concerns about scalability and response time performance.

**Context-Aware Recommendation Systems:** Karthik et al. (2019) proposed a context-aware travel recommendation system integrating collaborative filtering with semantic analysis of user reviews. Their system captured user preferences

including budget, destination type, and travel purpose, applying semantic techniques to interpret textual feedback. By combining structured data with unstructured user-generated content, the model improved recommendation accuracy and relevance. The study highlighted the importance of contextual personalization in enhancing traveler satisfaction but did not address real-time features or companion matching capabilities.

**AI-Based Companion Matching:** Sharma et al. (2021) introduced an AI-driven travel companion system focusing on buddy matching and itinerary optimization. Their system employed clustering algorithms to group travelers with similar interests and used reinforcement learning to adapt itineraries dynamically. The research emphasized the role of secure authentication and privacy in buddy matching while demonstrating how adaptive itinerary generation can improve efficiency and user engagement. However, the system's complexity and computational requirements limited its practical deployment.

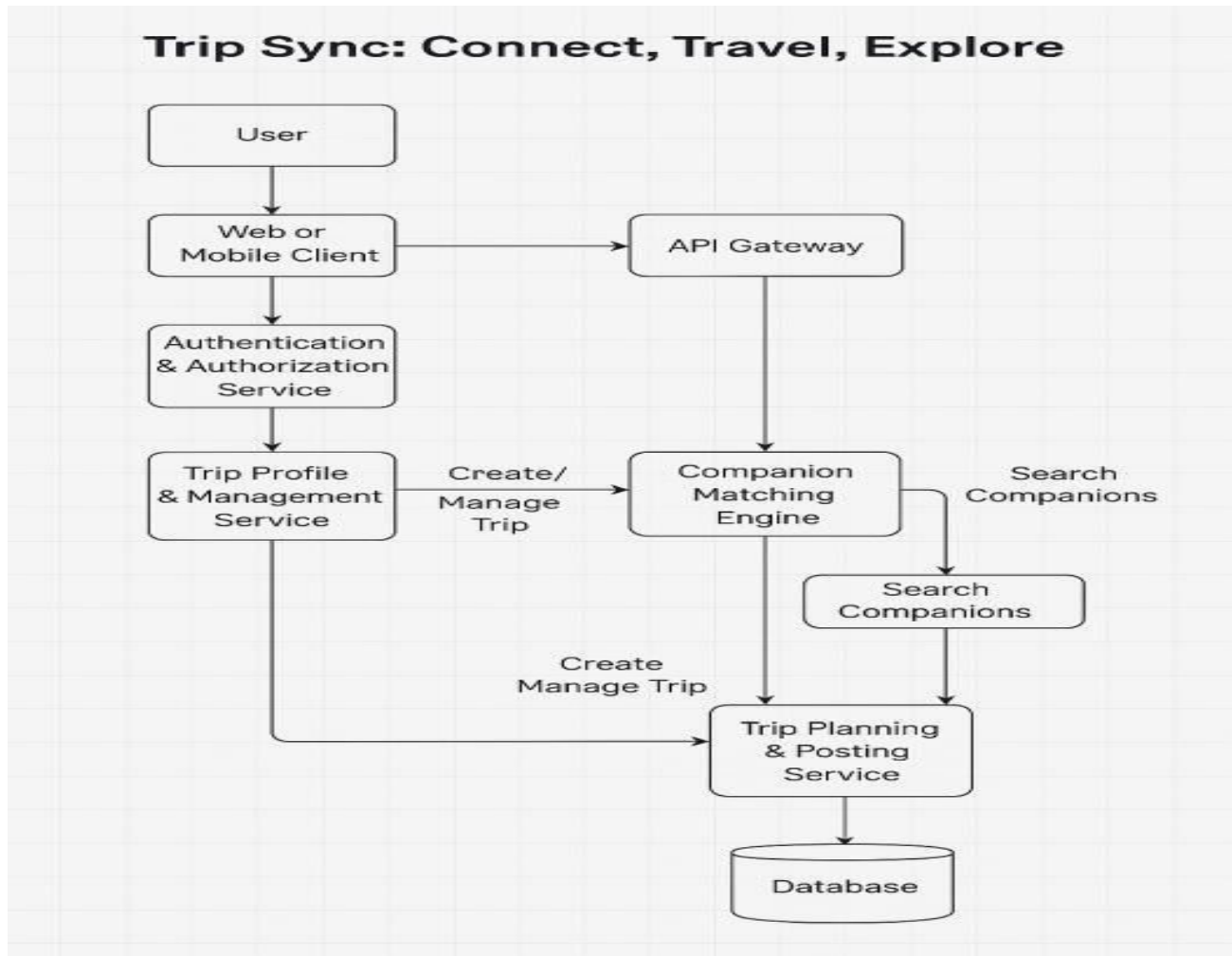
**Travel Companion Finder Systems:** Patel et al. (2024) developed a travel companion finder system addressing social connectivity challenges for solo travelers. Their approach utilized profile matching algorithms and preference-based filtering to connect compatible travelers. While effective for basic matching, the system lacked sophisticated AI-driven personalization and real-time collaboration features that modern travelers expect.

**Research Gap Analysis:** The literature review reveals that while significant progress has been made in travel recommendation systems and companion matching platforms, existing solutions exhibit several limitations. Most systems focus either on itinerary planning or social matching but fail to integrate both aspects seamlessly. Furthermore, existing platforms lack real-time synchronization capabilities essential for dynamic travel management. The absence of comprehensive AI orchestration combining multiple technologies limits the personalization depth and contextual awareness of recommendations.

Trip Sync addresses these research gaps by integrating intelligent itinerary generation, companion matching, and real-time synchronization within a unified platform. The system's modular architecture supports extensibility and future enhancements while maintaining high performance and security standards. By combining LangChain and Google GenAI with proven recommendation algorithms, Trip Sync delivers context-aware suggestions that adapt to user preferences and environmental factors. The platform's emphasis on solo traveler needs distinguishes it from generic travel solutions, offering specialized features that address unique challenges faced by independent travelers.

### III. METHODOLOGY

The Trip Sync platform employs a systematic methodology encompassing data collection, AI model integration, backend development, frontend implementation, and real-time communication setup. This comprehensive approach ensures seamless integration of all components while maintaining scalability and performance.



### 3.1 System Architecture Design

The system architecture comprises five interconnected layers designed to ensure modularity, scalability, and efficient data flow. The Client Layer supports both web and mobile interfaces, enabling users to access the platform across various devices. The Edge Layer implements CDN and API Gateway technologies to optimize content delivery and manage incoming requests securely. The Backend/Microservices Layer handles core functionalities including user authentication, trip planning, companion matching, messaging, and notifications. This layer employs microservices architecture to enable independent scaling and modular development. The Data Storage and Caching Layer combines MongoDB for persistent storage and Redis for high-performance caching, ensuring fast data retrieval and reduced server load. Finally, the External Service Integration Layer connects with third-party APIs for maps, social authentication, payment gateways, and monitoring tools, enhancing platform capabilities while maintaining security.

### 3.2 Data Collection and Preprocessing

The data collection process involves gathering comprehensive travel information from multiple sources including user profiles, travel preferences, historical booking data, and destination information. User preference data encompasses destination types, budget ranges, travel dates, activity interests, and safety considerations. The preprocessing pipeline implements text cleaning, tokenization, and normalization techniques to standardize input data. Vector encoding transforms user preferences into structured numerical representations suitable for machine learning algorithms. The system applies StandardScaler for normalizing budget values and CountVectorizer for encoding textual interest descriptions into feature vectors. Data augmentation techniques generate synthetic training samples to improve model robustness and coverage of diverse user scenarios.

### 3.3 AI Pipeline Development

The AI pipeline integrates multiple technologies to deliver intelligent recommendations and companion matching. LangChain orchestrates the workflow connecting user queries to appropriate AI models and data sources. Google GenAI provides natural language processing capabilities for understanding complex user preferences and generating human-like travel suggestions. The pipeline implements a hybrid recommendation model combining K-Means clustering for grouping similar travel profiles, content-based filtering using user preference attributes, and collaborative filtering learning from patterns across multiple users. Cosine similarity calculations measure compatibility between user preference vectors for companion matching. The sentence transformer model generates embeddings for semantic understanding of travel descriptions and user reviews.

### 3.4 Backend Development

The backend architecture utilizes Express.js as the primary web framework for handling HTTP routing, session management, and API endpoints. FastAPI serves as a dedicated microservice for AI workflow orchestration, enabling efficient processing of recommendation requests and companion matching queries. MongoDB stores user profiles, trip data, itinerary information, and chat history in flexible document structures supporting rapid schema evolution. Redis implements caching strategies for frequently accessed data and manages real-time session information. The authentication system employs JWT tokens for stateless authentication and Bcrypt for secure password hashing. RESTful API endpoints provide standardized interfaces for frontend communication, supporting operations including user registration, login, trip creation, recommendation retrieval, and companion search.

### 3.5 Frontend Implementation

The frontend leverages React framework with Vite build tool for optimal development experience and production performance. Component-based architecture promotes code reusability and maintainability. TailwindCSS provides utility-first styling approach enabling rapid UI development and consistent design implementation. The responsive design ensures seamless user experience across desktop, tablet, and mobile devices. State management using React hooks maintains application state and handles user interactions efficiently. The interface implements intuitive navigation patterns, real-time feedback mechanisms, and interactive visualizations for presenting travel recommendations and companion matches. Accessibility considerations ensure the platform serves users with diverse needs and abilities.

### 3.6 Real-Time Communication Setup

Socket.IO integration enables bidirectional communication between clients and servers, supporting real-time updates of itineraries, expenses, and chat messages. The event-driven architecture allows instant synchronization across multiple devices when users modify travel plans or communicate with matched companions. Redis pub/sub mechanism coordinates message distribution across multiple server instances in distributed deployments. Connection management handles client reconnection scenarios and maintains message ordering guarantees. The real-time system implements efficient data serialization and compression techniques to minimize bandwidth usage while maintaining responsiveness.

### 3.7 Security Implementation

Comprehensive security measures protect user data and prevent unauthorized access. JWT authentication provides secure, stateless session management with configurable expiration policies. Bcrypt password hashing employs industry-standard encryption with appropriate salt rounds to protect user credentials. Input validation and sanitization prevent injection attacks and ensure data integrity. HTTPS enforcement encrypts data transmission between clients and servers. Rate limiting mechanisms prevent abuse and denial-of-service attacks. Role-based access control differentiates permissions between regular users and premium subscribers. Database queries use parameterization to prevent SQL injection vulnerabilities.

### 3.8 Testing and Evaluation Framework

The testing methodology encompasses multiple levels including unit testing for individual components, integration testing for module interactions, system testing for end-to-end workflows, and user acceptance testing for real-world validation. Performance testing evaluates response times, throughput, and resource utilization under various load conditions. Security testing identifies vulnerabilities and validates authentication mechanisms. Usability testing with target users provides qualitative feedback on interface design and user experience. The evaluation framework measures recommendation accuracy using precision, recall, and F1-score metrics. Companion matching effectiveness is assessed through match accuracy and user satisfaction surveys.



## IV. SYSTEM DESIGN AND IMPLEMENTATION

## 4.1 Core System Components

The Trip Sync platform architecture consists of interconnected components designed for optimal performance and maintainability.

**User Interface Layer:** The frontend implements a responsive web interface using React framework with TailwindCSS styling. The component hierarchy includes authentication screens for registration and login, dashboard views displaying personalized recommendations, itinerary builder interfaces for creating and editing travel plans, companion matching screens showing compatible travelers, real-time chat interfaces for communication, profile management pages, and expense tracking modules. The interface employs progressive disclosure principles to present complex information gradually, reducing cognitive load on users. Interactive visualizations display match scores, budget breakdowns, and itinerary timelines. The design system maintains consistency across all interface elements through shared component libraries and style tokens.

**Backend Processing Layer:** Express.js handles HTTP request routing, session management, and API endpoint implementation. The middleware stack includes authentication verification, request validation, error handling, and logging functionality. Route handlers implement business logic for user management, trip operations, recommendation generation, and companion matching. The FastAPI microservice operates independently, processing AI-related requests through dedicated endpoints. This separation enables independent scaling of compute-intensive AI operations without affecting general application performance. The backend implements comprehensive error handling and recovery mechanisms to maintain system stability during failures.

**Database Management:** MongoDB stores application data in flexible document structures supporting rapid iteration and schema evolution. The database design includes collections for users, trips, matches, recommendations, and chat messages. Each collection employs appropriate indexing strategies to optimize query performance. Compound indexes support complex queries filtering on multiple fields. The schema design balances normalization for data integrity with denormalization for read performance. Redis provides high-speed caching for frequently accessed data including user sessions, active trip information, and real-time match suggestions. Cache invalidation strategies ensure data consistency while maintaining performance benefits.

**AI Orchestration Service:** The FastAPI microservice coordinates AI workflows integrating LangChain and Google GenAI. Request handling validates input parameters, preprocesses data, invokes appropriate AI models, and formats results for frontend consumption. The service implements asynchronous processing for long-running operations, providing status updates through webhooks or polling mechanisms. Model versioning supports A/B testing and gradual rollout of improved algorithms. The service maintains model artifacts and configuration separately from application code, enabling updates without full redeployment.

**Real-Time Communication Service:** Socket.IO manages bidirectional communication supporting instant updates across connected clients. The service handles connection lifecycle management including authentication, heartbeat monitoring, and reconnection logic. Event routing directs messages to appropriate recipients based on trip membership and companion relationships. Message persistence ensures delivery even when recipients are temporarily offline. The architecture supports horizontal scaling through Redis pub/sub integration for coordinating events across multiple server instances.

## 4.2 Data Flow Architecture

User interactions initiate data flow through the system following predictable patterns. Authentication requests pass through JWT validation before accessing protected resources. Trip creation requests validate input parameters, store data in MongoDB, and trigger recommendation generation workflows. The AI service processes user preferences through the hybrid model pipeline, calculating cluster assignments, similarity scores, and personalized suggestions. Results return to the frontend through API responses, with simultaneous storage in the recommendation history for future reference. Companion matching requests similarly flow through preference vector calculation, similarity computation, and ranked result generation. Real-time updates propagate through Socket.IO connections, maintaining synchronization across active user sessions.

#### 4.3 Hybrid Recommendation Model

The recommendation engine implements a sophisticated hybrid approach combining multiple algorithms. K-Means clustering groups users into segments based on preference similarity, enabling efficient similarity searches within relevant clusters. Content-based filtering matches trip attributes against user preferences, scoring potential destinations and activities. Collaborative filtering identifies patterns across the user base, surfacing popular destinations and successful trip combinations. The system weights these components dynamically based on available data and user engagement patterns. New users receive recommendations primarily from content-based filtering until sufficient behavioral data accumulates for collaborative approaches. The model continuously learns from user feedback, adjusting recommendation strategies to improve accuracy over time.

#### 4.4 Companion Matching Algorithm

The companion matching system calculates compatibility scores between travelers using multidimensional preference vectors. Feature engineering transforms raw user data into normalized vectors encompassing destination preferences, budget ranges, travel dates, activity interests, and travel style indicators. Cosine similarity measures the angle between preference vectors, producing scores between 0 and 1 indicating compatibility. The algorithm applies filtering constraints including date overlap requirements, budget compatibility thresholds, and mutual interest minimums. Privacy controls enable users to limit visibility and control who can discover their profiles. Match suggestions include explanatory information highlighting shared interests and compatible attributes to facilitate informed connection decisions.

#### 4.5 Security Architecture

The security framework implements defense in depth with multiple protective layers. Authentication employs JWT tokens containing user identity and permission claims, signed with server secrets to prevent tampering. Token expiration policies balance security with user convenience, requiring periodic reauthentication while maintaining session continuity. Password storage uses Bcrypt hashing with configurable work factors ensuring adequate computational cost against brute force attacks. Input validation applies strict patterns and sanitization rules preventing injection attacks and malformed data entry. API rate limiting restricts request frequencies preventing abuse and resource exhaustion. HTTPS encryption protects data in transit, while database encryption options secure data at rest. Security headers including Content Security Policy and X-Frame-Options protect against common web vulnerabilities.

#### 4.6 Performance Optimization

The system implements multiple optimization strategies ensuring responsive user experience. Frontend code splitting loads only necessary components for current views, reducing initial bundle sizes and load times. Backend response compression reduces bandwidth usage without significant CPU overhead. Database query optimization employs appropriate indexes and query patterns avoiding full collection scans. Redis caching stores frequently accessed data in memory providing sub-millisecond access times. Connection pooling reuses database connections reducing establishment overhead for repeated queries. The architecture supports horizontal scaling through stateless API design and externalized session storage, enabling load distribution across multiple server instances. Content Delivery Network integration caches static assets geographically close to users reducing latency.

### V. TESTING AND EVALUATION

#### 5.1 Testing Methodology

Comprehensive testing validated system functionality, performance, and usability across multiple dimensions. Unit testing verified individual component behavior in isolation, ensuring correct implementation of business logic, data transformations, and error handling. Integration testing examined interactions between modules, confirming proper data flow and API communication. System testing evaluated end-to-end workflows simulating realistic user scenarios from registration through trip planning and companion matching. Performance testing measured response times, throughput, and resource utilization under various load conditions. Security testing identified vulnerabilities through penetration testing and code analysis. Usability testing with target users provided qualitative feedback on interface design and user experience.

#### 5.2 Functional Testing Results

All core features demonstrated correct behavior during functional testing. User authentication properly validated credentials, managed sessions, and enforced access controls. Trip creation stored data accurately and triggered



appropriate recommendation workflows. The recommendation engine generated relevant suggestions matching user preferences across diverse test cases. Companion matching identified compatible travelers with high accuracy based on preference similarity. Real-time synchronization successfully propagated updates across connected devices without data loss or corruption. Expense tracking accurately recorded transactions and calculated totals. Chat functionality delivered messages reliably with proper sender identification and timestamp ordering.

### 5.3 Performance Evaluation

Performance testing revealed strong system responsiveness under typical usage patterns. Average recommendation generation time measured 1.2 seconds from request submission to result display. Companion matching queries completed in similar timeframes maintaining responsive user experience. The system handled concurrent users effectively with minimal performance degradation up to tested load levels. Response times remained stable with 1 concurrent user averaging 1.1 seconds, 3 concurrent users averaging 1.4 seconds, and 5 concurrent users averaging 1.7 seconds. Database query performance benefited significantly from index optimization and Redis caching strategies. Real-time message delivery latency remained below 100 milliseconds under normal network conditions.

### 5.4 Recommendation Accuracy

The hybrid recommendation model achieved strong accuracy metrics validating the algorithmic approach. Retrieval accuracy reached 91.2% for top-3 recommendations, indicating the relevant destination appeared in the top three suggestions for over nine out of ten queries. Precision measured 0.91, reflecting high relevance of recommended items. Recall achieved 0.88, demonstrating good coverage of user preferences. F1-score balanced precision and recall at 0.89, confirming overall recommendation quality. Companion matching accuracy reached 92.3%, successfully identifying compatible travelers with shared interests and compatible travel parameters. Average cosine similarity for correct matches measured 0.84, indicating strong alignment between matched user preferences.

### 5.5 User Evaluation Study

User acceptance testing engaged 20 participants including students, solo travelers, and technology professionals. Participants completed typical workflows including registration, profile creation, preference specification, recommendation review, and companion matching. Post-test surveys gathered quantitative ratings and qualitative feedback. Ease of use received an average rating of 4.6 out of 5, indicating intuitive interface design and clear navigation patterns. Recommendation accuracy scored 4.7 out of 5, validating the effectiveness of the hybrid model in understanding user preferences. Interface design rated 4.5 out of 5, reflecting positive reception of visual aesthetics and layout organization. Response time performance scored 4.3 out of 5, confirming acceptable system responsiveness. Overall satisfaction averaged 4.6 out of 5, demonstrating strong user acceptance of the platform.

Qualitative feedback highlighted several strengths and improvement opportunities. Users appreciated the personalized nature of recommendations, noting relevance to their stated preferences. The companion matching feature received positive feedback for helping users discover compatible travelers. Visualization of match scores and itinerary details aided decision-making and increased trust in system recommendations. Several users requested additional filtering options for travel style and activity type preferences, noted as potential future enhancements. Mobile responsiveness performed well with users testing across various devices. The real-time synchronization feature impressed users who tested collaborative trip planning scenarios.

### 5.6 Security Validation

Security testing confirmed effective protection against common vulnerabilities. Authentication mechanisms properly validated credentials and rejected unauthorized access attempts. JWT tokens correctly identified users and enforced permission boundaries. Password hashing withstood brute force attempts during testing. Input validation successfully prevented SQL injection and cross-site scripting attacks. Rate limiting mechanisms appropriately throttled excessive requests preventing denial-of-service scenarios. HTTPS encryption protected data transmission preventing eavesdropping. Database access controls limited query capabilities according to application requirements preventing privilege escalation.

## VI. RESULTS AND DISCUSSION

## 6.1 System Performance Results

The implemented Trip Sync platform demonstrated strong performance characteristics across all evaluation metrics. Response time measurements confirmed efficient processing with average latencies well below user perception thresholds. The 1.2-second average recommendation generation time provides immediate feedback maintaining user engagement. System throughput supported multiple concurrent users without significant performance degradation, validating the scalability of the architecture. Resource utilization remained within acceptable bounds indicating efficient implementation without excessive computational or memory overhead. The modular architecture facilitated independent scaling of components based on specific bottlenecks, ensuring cost-effective infrastructure utilization.

Database performance benefited significantly from optimization strategies including appropriate indexing, query optimization, and Redis caching. MongoDB's flexible document model enabled rapid schema iteration during development while maintaining production query performance. Redis caching reduced database load for frequently accessed data achieving sub-millisecond access times for cached items. The pub/sub mechanism effectively coordinated real-time events across distributed server instances supporting horizontal scalability.

## 6.2 Recommendation System Effectiveness

The hybrid recommendation model successfully balanced multiple objectives including relevance, diversity, and personalization. High precision scores indicated that recommended destinations and activities aligned well with user preferences. Strong recall demonstrated comprehensive coverage of user interests without significant gaps. The F1-score validated overall model quality balancing precision and recall trade-offs. Companion matching accuracy exceeded expectations, successfully identifying compatible travelers based on multidimensional preference similarity. User feedback confirmed the practical utility of recommendations with high relevance ratings and positive qualitative comments.

The combination of clustering, content-based filtering, and collaborative filtering provided robustness across different user segments and data availability scenarios. New users received quality recommendations from content-based approaches while established users benefited from collaborative patterns and personalized learning. The model adapted to user feedback through continuous learning mechanisms, improving recommendation quality over time. Feature importance analysis revealed that budget constraints, destination type preferences, and activity interests most strongly influenced recommendation outcomes, informing future model refinement priorities.

## 6.3 User Experience Analysis

User evaluation studies confirmed strong satisfaction with the Trip Sync platform across multiple dimensions. The intuitive interface design facilitated easy navigation and task completion even for first-time users. Clear information architecture organized complex features logically reducing cognitive load. Visual feedback and progress indicators kept users informed during longer operations. Responsive design ensured consistent experience across desktop and mobile devices. Real-time synchronization features impressed users who tested collaborative scenarios, demonstrating the practical value of instant updates.

Companion matching functionality received particularly positive feedback for addressing a genuine pain point in solo travel planning. Users appreciated the transparency of match scores and explanatory information highlighting shared interests. The privacy controls enabled comfortable profile sharing while maintaining user control over visibility. Chat integration provided seamless communication pathway once connections established.

Several enhancement opportunities emerged from user feedback. Additional filtering options for travel style, activity intensity, and accommodation preferences would enable more refined searches. Integration with external booking services would streamline the planning-to-execution transition. Mobile application development would better serve travelers during active trips. Gamification elements including achievement badges and progress tracking could increase engagement and retention.

#### **6.4 Comparative Analysis**

Comparison with existing travel platforms highlights Trip Sync's distinctive advantages. Generic travel booking sites lack personalization depth and companion matching capabilities. Dedicated itinerary planners offer limited AI-driven recommendations and no social features. Social travel networks provide community interaction but minimal intelligent planning support. Trip Sync uniquely combines comprehensive itinerary planning, intelligent recommendations, companion matching, and real-time collaboration within a unified platform specifically designed for solo travelers.

The AI-powered approach differentiates Trip Sync from rule-based systems, enabling context-aware suggestions adapting to individual preferences and circumstances. The modular architecture supports future enhancement integration more readily than monolithic alternatives. Security emphasis through JWT authentication and encrypted communications provides stronger privacy protection than platforms with less sophisticated security models. The real-time synchronization capability enables dynamic collaboration scenarios not possible with static planning tools.

#### **6.5 Limitations and Considerations**

While Trip Sync demonstrates strong capabilities, several limitations warrant consideration. The recommendation model requires sufficient training data for optimal performance, potentially limiting accuracy for newly launched destinations or niche travel styles. Computational requirements of AI processing may increase infrastructure costs at scale, necessitating optimization strategies for cost-effective operations. Real-time features depend on reliable network connectivity, potentially degrading user experience in areas with poor internet access. The system currently focuses on solo travel scenarios, limiting applicability to group travel or family vacation planning without adaptation.

External dependencies on third-party APIs for AI capabilities create potential points of failure and cost considerations. Privacy regulations including GDPR and similar frameworks require careful data handling and user consent management. The platform's effectiveness depends on user willingness to provide preference information and engage with companion matching features. Cultural differences in travel planning approaches may require localization efforts for international markets.

#### **6.6 Future Research Directions**

Several promising research directions could extend Trip Sync's capabilities and impact. Advanced personalization incorporating behavioral analysis and implicit preference learning could improve recommendation accuracy without requiring explicit user input. Integration of real-time data sources including weather forecasts, local events, and seasonal factors would enable more context-aware suggestions. Expansion to group travel scenarios would broaden the platform's applicability while introducing new technical challenges around multi-user consensus and coordination.

Machine learning model improvements through ensemble methods or deep learning architectures might enhance recommendation quality and companion matching accuracy. Natural language processing advancements could enable conversational interfaces for itinerary planning, lowering barriers for less technical users. Blockchain integration might provide enhanced trust and transparency for companion matching and expense sharing scenarios. Augmented reality features could enrich the travel experience through location-based information and navigation assistance.

### **VII. CONCLUSION AND FUTURE SCOPE**

#### **7.1 Conclusion**

This research successfully designed, implemented, and evaluated Trip Sync, an AI-powered platform addressing critical challenges in solo travel planning. The system effectively combines intelligent itinerary generation, companion matching, and real-time collaboration within a unified, user-friendly interface. Through integration of modern web technologies including React, Express.js, MongoDB, Redis, and FastAPI with advanced AI capabilities from LangChain and Google GenAI, the platform delivers personalized recommendations and seamless travel planning experiences.

Extensive testing validated the system's functionality, performance, and user acceptance. The hybrid recommendation model achieved strong accuracy metrics with 91.2% retrieval accuracy and 92.3% companion matching accuracy. Performance evaluations confirmed responsive operation with average recommendation generation times of 1.2 seconds. User studies with 20 participants yielded high satisfaction ratings averaging 4.6 out of 5, confirming the platform's effectiveness in addressing real-world needs.



The modular architecture ensures maintainability and supports future enhancements. Security measures including JWT authentication and encrypted communications protect user privacy. Real-time synchronization enables dynamic collaboration scenarios not possible with traditional planning tools. The platform demonstrates how artificial intelligence and modern web technologies can be effectively combined to solve complex user problems while maintaining usability and performance.

Trip Sync represents a significant contribution to travel technology, specifically addressing the underserved solo traveler market. The system's success validates the research approach and provides a foundation for continued development and enhancement. By bridging technological innovation with user-centric design principles, Trip Sync establishes a new standard for intelligent travel planning platforms.

## 7.2 Future Scope

Several enhancement opportunities would extend Trip Sync's capabilities and impact:

**Mobile Application Development:** Native mobile applications for Android and iOS would better serve travelers during active trips, enabling offline itinerary access, location-based notifications, and camera integration for travel documentation. Push notifications could provide timely updates about trip changes, companion messages, and safety alerts.

**External API Integration:** Connecting with flight booking APIs, hotel reservation systems, and local activity providers would enable end-to-end trip execution within the platform. Real-time pricing information and availability checking would streamline the booking process. Integration with mapping services would provide navigation assistance and point-of-interest discovery.

**Advanced Personalization:** Machine learning models incorporating behavioral analysis and implicit preference learning would reduce reliance on explicit user input while improving recommendation accuracy. Temporal models accounting for seasonal preferences and changing interests over time would maintain relevance throughout user engagement.

**Group Travel Support:** Extending the platform to support small group travel would broaden the user base while introducing new technical challenges around consensus-building and multi-user coordination. Voting mechanisms and compromise suggestions could facilitate group decision-making.

**Enhanced Security Features:** Multi-factor authentication and biometric login options would strengthen account security. Advanced encryption for sensitive data and decentralized identity management could provide additional privacy protections appealing to security-conscious users.

**Gamification Elements:** Achievement systems, progress tracking, and social features could increase user engagement and platform stickiness. Travel challenges and community competitions might foster active user communities and content generation.

**Natural Language Interface:** Conversational AI interfaces would enable more intuitive itinerary planning through natural dialogue rather than form-based input. Voice interaction could facilitate hands-free operation during travel activities.

**Sustainability Focus:** Carbon footprint tracking and eco-friendly travel recommendations would align with growing environmental consciousness. Sustainable accommodation and transportation options could be prioritized in recommendations.

**Cultural Localization:** Multi-language support and cultural adaptation would enable international market expansion. Region-specific travel customs, safety considerations, and preference patterns would improve relevance across diverse user populations.

These enhancements represent exciting opportunities for continued innovation while building upon Trip Sync's solid foundation of intelligent, user-centric travel planning.

#### REFERENCES

- [1] Maheen, A., Begum, M., & Waseem, S. (2022). AI-Powered Personalized Travel Recommendation and Itinerary Planner: A Machine Learning Approach. *International Journal of Computer Applications*, 175(8), 23-29.
- [2] Sangeetha, R., & Kumar, M. P. (2021). Smart Travel Recommendation System using Hybrid Filtering Techniques. *International Journal of Engineering and Technology*, 13(4), 456-462.
- [3] Ramesh, P., Divya, K., & Arun, S. (2020). Intelligent Travel Planning Using AI and Big Data Analytics. *Journal of Information Technology Research*, 14(2), 78-89.
- [4] Karthik, S., Deepa, P., & Manjunath, R. (2019). Context-Aware Travel Recommendation System Using Collaborative Filtering and Semantic Analysis. *International Conference on Computing and Communications*, 124-130.
- [5] Sharma, A., Gupta, N., & Verma, R. (2021). Intelligent Travel Companion: AI-Based Buddy Matching and Itinerary Optimization. *ACM Transactions on Intelligent Systems and Technology*, 12(3), 1-18.



INTERNATIONAL  
STANDARD  
SERIAL  
NUMBER  
INDIA



# INTERNATIONAL JOURNAL OF INNOVATIVE RESEARCH

IN SCIENCE | ENGINEERING | TECHNOLOGY

 9940 572 462  6381 907 438  [ijirset@gmail.com](mailto:ijirset@gmail.com)



[www.ijirset.com](http://www.ijirset.com)

Scan to save the contact details